

AWARD WINNING PROJECT



PROJECT DESCRIPTION

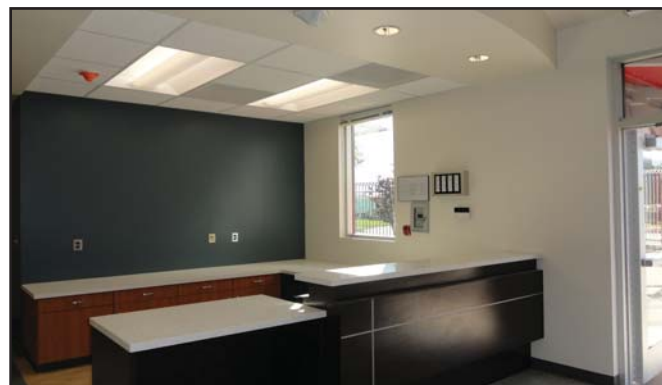
Silver Creek was approached following the Design Development phase to provide modular design assistance and to prepare the construction documents for a 2,880 square foot community medical and dental care clinic. The building consists of 6 exam rooms, private offices, a two station dental clinic, meeting room, benefits office, dispensary, laboratory/preparation room, lobby/waiting room and restroom facilities. The building exterior utilizes cement panel siding with aluminum reveals, aluminum storefront windows and doors, and shading devices to diffuse the direct sunlight.

Silver Creek developed customized building modules to meet desired ceiling heights of 9'-6" (10'-0" in some areas) while also allowing adequate attic space for the large duct runs required for the clinic spaces. Sustainable features include a high performance air handler, natural daylighting from windows and/or tubular skylights, dual level switching with occupancy sensors, low and no-voc finishes and materials to ensure a high level of indoor air quality.

The project owner and design team decided to investigate modular construction as an opportunity to reduce the project cost. Silver Creek collaborated with the team on several cost reduction and value engineering measures. With minor design modifications the project was delivered at significant cost savings compared to a site built structure while also reducing the construction duration.

PROJECT TEAM

Los Angeles Unified School District
DLR Group / WWCOT Architects
Silver Creek Industries

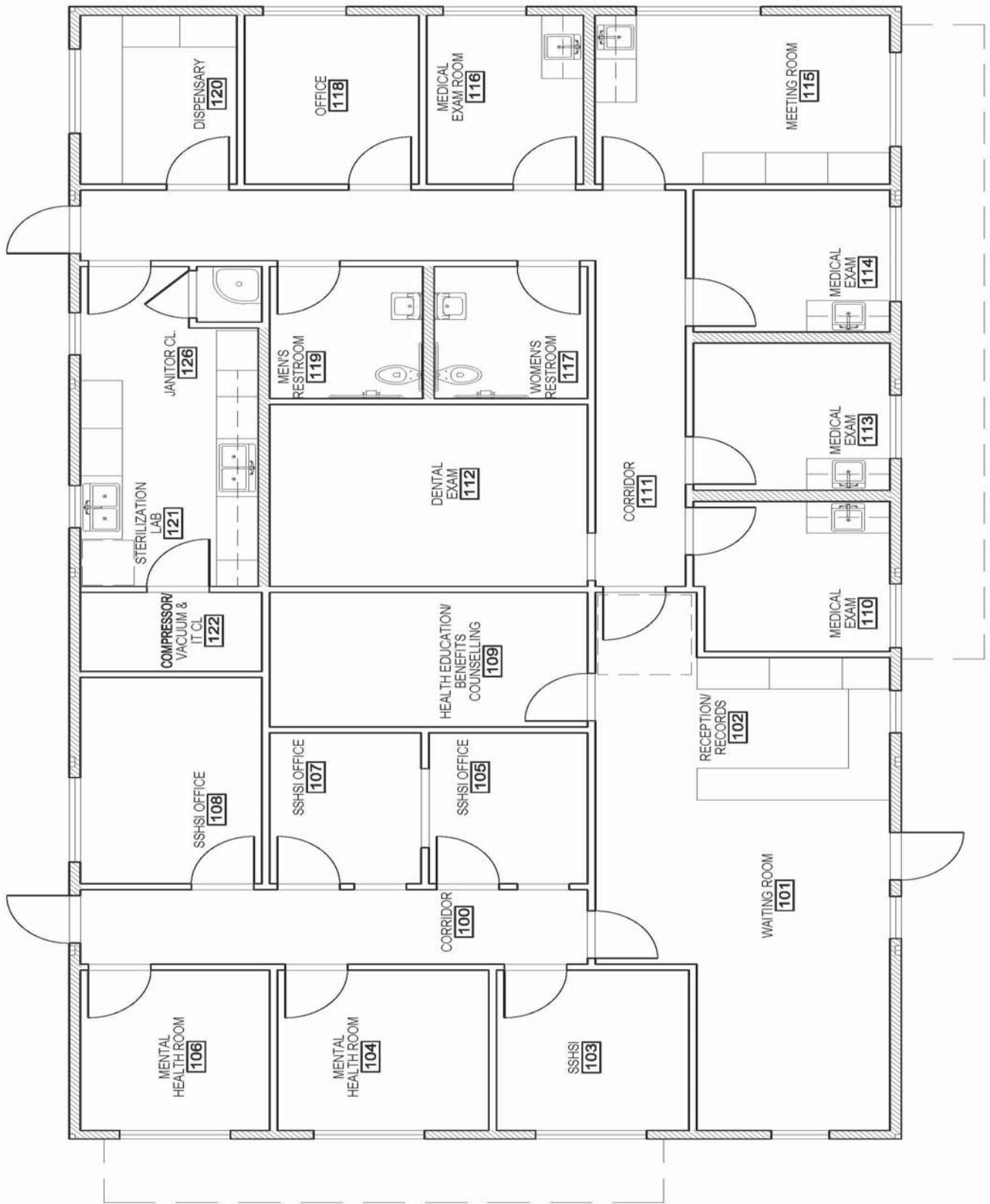


Building for the Next Generation

Silver Creek Industries, Inc.
2830 Barrett Avenue, Perris, CA 92571
951.943.5393

www.silver-creek.net
info@silver-creek.net |   

©Silver Creek Industries 2013



Building for the Next Generation